

# “HeroNeroZero”

## Technical Rider



By

**Lisbeth Gruwez/ Voetvolk**

With

**Lisbeth Gruwez/ Rob Fordeyn/ Maarten Van Cauwenberghe**

60 minutes (no intermission)

*This technical rider is meant as a guideline and can be adapted according to the specific needs of the theatre.*

## The Set

We use a black backdrop, sides and black masking of the theatre (hang them stretched, not folded) to make a blackbox (“à l’Allemande” = closed sides). We absolutely need solid parquet: if the floor is not resilient, a wooden dance floor has to be constructed.

On the floor black dance vinyl, clean and in good condition.

*Before the performances as well as the rehearsals, **the floor needs to be cleaned.***

A device, 120cm long, (that drops “snow”(=flour) at the end of the performance ) needs to be hung at the back leftside, 6,50m depth. This can be hung on the flying bars or the grid of the theatre.

We will use 13 wooden beams during the performance on stage. *We provide the beams and the snowmachine.*

***Please inform us if the stagefloor is sloping because this might cause a problem to put the beams upright!***

- The performing area: min. 10m x 10m max. 14m wide. If the stage is wider than 14m, the sides need to be hung closer to the middle, and the front sides need to be masked with black curtain.
- **When we play more than one night we need a washing machine/service to clean the costumes.**

**On stage there will be:**

- 1 Guitar amp
- 1 Fender Rhodes Piano
- 1 Nord Lead Piano
- 13 Beams (6x17x150cm)
- 1 black bucket

**\*Please provide:**

- 1 black bucket (10 liter)
- 2 kg smooth flour (for the snowmachine)
- 6 AA batteries/show (duracell,...)

**Lighting > see plan**

**We need a programmable lighting desk**

# Sound

## FOH PA SPECS

A PA-system sufficient to the venue, capable of producing an overall equal and undistorted sound.

The system must be ready to operate 1 hour before soundcheck without bugs and buzz.

A solid desk of minimum **14 mono input-channels with 48v+insert, 2 stereo channels**, parametric EQ, low cut, pad, phase reverse, and phantom power, 2 subgroups and **4 auxillary sends**.

If possible we like two speakers hung at the back of the stage & 2 at the front, with seperate sends.

For bigger venues: we need (a) clusterspeaker(s), centrally hung, at the same depth as the F.O.H. speakers.

**\*We are using 3 UHF wireless microphones systems, AKG SR81, we have to know the available frequencies.**

## FX RACK - MAIN PA EQ

- 4x Active DI (*bss AR-133, radial J48,..*)
- 1x Digital Delay (*TC D-TWO,..*)
- 1x Multi FX /Reverb (*SPX990, M2000*)
- 2x Noise gate (*Drawmer*)
- 1x Compressor (*DBX, Focusrite*)

## STAGING & Power supply

\*The backline power supply needs to be a stable, earthed 220v

\* Allow space for 2x 4U rack at FOH and provide 220v

CONTACTS sound/ FOH : Jan Stoop +32 (0)487.108770  
[janstoop@rocketmail.com](mailto:janstoop@rocketmail.com)

# HeroNeroZero

CH	SOURCE	MIC / DI	INSERT	REMARKS
1	Keys L	Active DI		48v
2	Keys R	Active DI		48v
3	Loops	Active DI		48v
4	Rhodes	Active DI	<i>Expander*</i>	48v
5	Amp Rhodes	e609/SM57	<i>Expander*</i>	S/B
6	Vocal Hero	SM58	Comp	-
7	Body Mic Rob	<i>Own mic*</i>		2x AA bat.
8	Body Mic Maarten	<i>Own mic*</i>		2x AA bat.
9	Body Mic Lisbeth	<i>Own mic*</i>		2x AA bat.
10	Lyric/Computer	-		
11	Sinus/Computer	-		
12	Soundscape/Comp	-		
13	Soundscape/Comp	-		
14>17	FX Returns	-		
<i>Expander &amp; (*) will be brought by FOH engineer</i>				

S/B = Short Boom

\* We provide

## **Dressing Area**

- **1 clean dressing room with clearly lit mirror and electricity**
  - **shower with hot and cold water and fresh towels every day!**
  - **washing machine & washing powder/product**
  - **some bottles of drinking water, fruits and nuts, some sport/energy bars**
  - **4 Redbull**
  - **some wine and beer for after the performance!!**
- \* PLEASE PROVIDE 5 HOT MEALS or an eating facility >there are NO VEGETARIANS**

## **General**

### **Please provide:**

- 2 lighting technicians
- 1 sound technician
- 1 light-, 1 sound technician during performances

This production is touring with 2 technicians.

Please notice that during the performance as well as during rehearsals there has to be absolute silence in the theatre.

***For further information you can always contact:***

### **Jan Stoop**

Sound/ Technical coordination

Tel: +32 487/10.87.70

Email: [janstoop@rocketmail.com](mailto:janstoop@rocketmail.com)

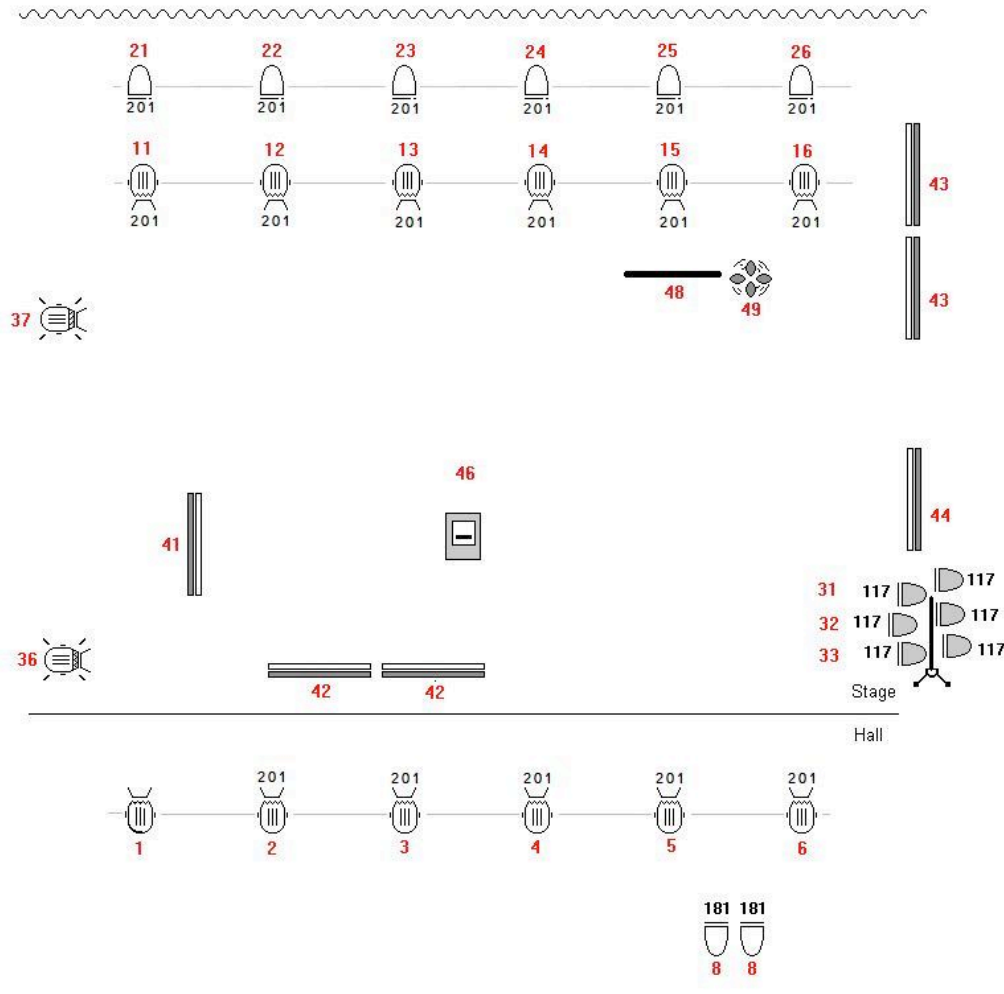
### **Laurence Konyk**

Light

Tel: +32 475/57.73.76


Email: [lkautomatik@gmail.com](mailto:lkautomatik@gmail.com)


# LIGHTS HERO NERO ZERO




~~~~~ Black Backdrop

8 X  Par 64 CP62 1kW

6 X  Par 64 CP60 1kW

12 X  PC 1kW with barndoors

2 X  Fresnel 1kW with barndoors on floor

1 X  HQI

1 X  SNOWFAKER

6 X  TL on floor